

The superior expanded PVC board for interior & exterior retail signage

As we readjust to a COVID-19 world and prepare to reopen retail environments, the need for new signage will be high and immediate. **One major requirement of signage material in a COVID-19 world will be the ability to clean and disinfect easily.** SINTRA® has excellent chemical resistance and is suitable for a variety of cleaning methods and solutions, combined with its overall durability and longevity it is the ideal substrate for retail signage and display fixtures. We have created the following product benefits overview as well as recommended cleaning and disinfecting guidelines for the SINTRA Collection. As always the safety of our customers, employees, and facilities is of primary importance, please reach out to your Sales Manager if there is any way 3A Composites USA can further assist in our shared battle against COVID-19.

## WHY SINTRA?

- Very good chemical resistance
- Superior dent and scratch resistance
- Light weight yet rigid and durable
- Smooth surface is easily cleaned with almost any commercial cleaner / disinfectant
- Bright white premium surface for high quality prints
- Manufactured in Benton, Kentucky
- Quick response to high demand with a 100% USA supply chain
- Run-to-size orders with short lead times
- Self-Extinguishing - Class A (ASTM E-84) in 3mm and less
- Easily fabricated using conventional power tools and fasteners
- Available in sheets as wide as 5' and long as 10' - custom sizes are available



SINTRA can be used for various retail display applications including promotional campaigns and wayfinding signage.

Images courtesy of 858 Graphics & Agio Imaging.



## CLEANING & DISINFECTING SINTRA

SINTRA materials present relatively non-adherent, inert surfaces to soil and bacteria. If needed, a variety of methods for cleaning and disinfecting are available. Most commercially available cleaners and disinfectants can be used; however, please note the following recommendations.

### DO NOT USE:

- Wire brushes, steel wool, sandpaper, abrasives or other similar cleaning tools which will mechanically abrade the surface
- Commercial cleaners/disinfectants which contain abrasive agents or those that contain ketones or aldehydes

### COMMON DISINFECTANTS:

- Alcohols - Denatured alcohol (ethanol), Isopropyl (rubbing) alcohol, Methanol (wood alcohol) are acceptable
- Dilutions of chlorine bleach (as recommended by the manufacturer) are acceptable

It is recommended practice to first test an inconspicuous area before use on a large scale.

For more information, please contact your local sales representative or our help desk:

3A Composites Americas

[info.usa@3acomposites.com](mailto:info.usa@3acomposites.com)

800.626.3365

The superior expanded PVC board for interior & exterior retail signage

## ALL RIGID SUBSTRATES ARE NOT CREATED EQUAL.

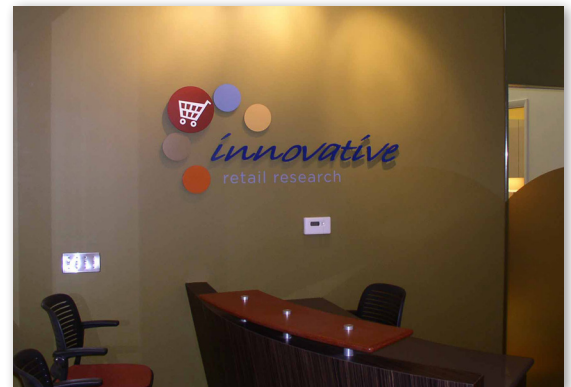
That's the philosophy adhered to by employees at Kalamazoo, Mich.-based Agio Imaging, a large-format custom print solution provider, when determining the best rigid substrate for graphic displays. When PVC (polyvinyl chloride) is deemed the best solution for creating interior signage, Agio Imaging turns to SINTRA® graphic display board by 3A Composites USA.

Agio Imaging recently has turned to SINTRA graphic display board to create a wide range of interior wall signage including wayfinding signage, corporate departmental designation wall décor and school educational signage.

[Read more](#) on how SINTRA can solve your interior signage needs in the full case study!

### Agio Imaging Turns to Trusted SINTRA PVC Board for Interior Signage

Images courtesy of  
© Agio Imaging



## PRODUCT AVAILABILITY

	Gauges	Colors		Sizes
<b>SINTRA</b>	1mm, 2mm, 3mm, 6mm, 10mm, 12.7mm	Bright White Black Gray Light Gray	Dark Red Bright Yellow Dark Green Dark Blue Custom Colors	1M (39.37") x 96", 48"x96", 48"x120", 50"x100", 60"x96", 60"x120", 2M (79.92") x 120" Custom sizes available
<b>SINTRA ECLIPSE</b>	3mm, 6mm, 12.7mm	Bright White front facer on standard black SINTRA		48" x 96"
<b>SINTRA VERS</b>	3mm, 4mm, 5mm, 6mm	Bright white Black		48" x 96", 50" x 100", 60" x 120" custom sizes available
<b>SINTRA CONSTRUCT</b>	6mm, 10mm, 12.7mm, 19mm	White Black		48" x 96"; Custom sizes available

Due to multiple product configurations, please refer to the website for product availability in the desired thickness and size.